




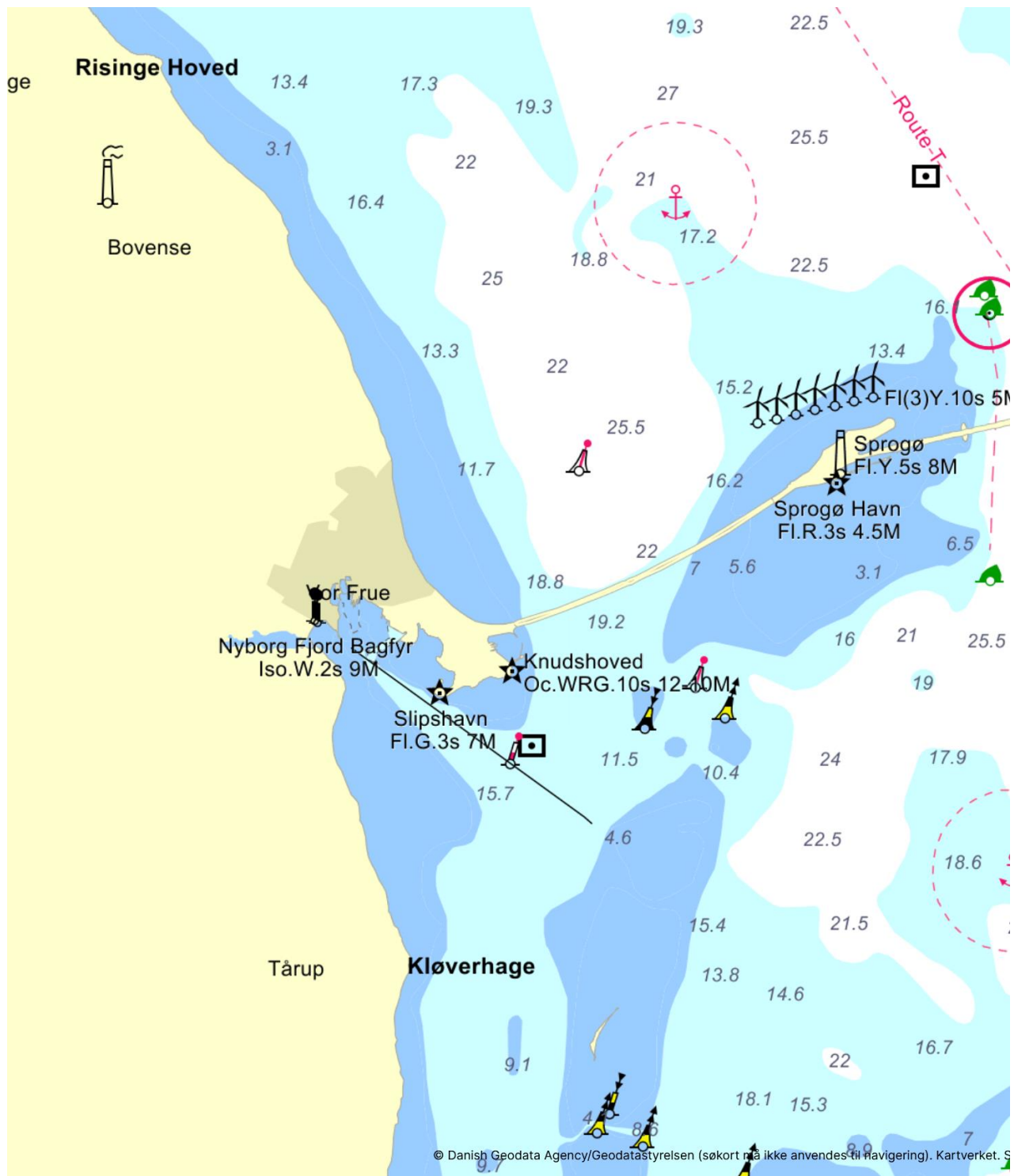


	<p style="text-align: center;">Stage 4 of the DIF/DS/DBO Danish Championships 2023 for iQFoil and IFCA Slalom Nyborg Surfklub, September 16-17th 2023</p>
1	RULES
1.1	The event is governed by the rules as defined in <i>The Racing Rules of Sailing</i> including the prescriptions of Nordic Sailing Federation and Danish Sailing Association.
1.2	Furthermore, the following applies: RRS Appendix B, except RRS B5 61.1 and B8.A8 (for iQFoil), Windsurfing Slalom Racing Rules (WSRR) (for IFCA Slalom), RRS Appendix T , (IFCA) Championship Rules (for IFCA Slalom), Statutes for the Danish Championships in Sailing , DBO Equipment Rules for iQFoil and IFCA (DBO-ER) 2023 , DBO Championship Rules for iQFoil and IFCA (DBO-CR) 2023 .
1.3	In IFCA Championship Rule 9.1, the minimum wind speed is changed from 11 knots to 14 knots from 1 minute before the starting signal to 50% of the starting boards have completed the heat.
2	NOTICES TO COMPETITORS
2.1	Notices to competitors will be posted on the official notice board(s) located in the Danish Championships WhatsApp Group .
3	SIGNALS MADE ASHORE
3.1	Signals made ashore will be displayed at the official flagpole located by the Nyborg club house, unless the venue is moved to Slipshavn.

4	SCHEDULE
4.1	<p><u>Day 1:</u> 07.45 - 08.00: Late entry 08.00 - 09.30: Check-in 09.00: Intended discipline announced 09.30: Skippers' meeting. Course diagram(s) announced 10.30: Elimination table for slalom announced 11.00: 1st possible warning signal</p> <p><u>Day 2 and following days:</u> 08.30: Intended discipline announced. 09.00: Skippers' meeting. Course diagram(s) announced 09.30: Elimination table for slalom announced 10.00: 1st possible warning signal</p> <p><u>Last day:</u> After last race: Prize giving</p>
5	CLASS FLAGS
5.1	<p>iQFoil 9 (Men/U21): </p> <p>iQFoil 7-8 (Women/U19/U17): </p> <p>IFCA Slalom: </p>
6	RACING AREAS
6.1	In Addendum A, a map of the general race area is shown.
6.2	For Slalom and Course Racing, the race area will be close to either Nyborg Strand or Slipshavn, while keeping a minimum water depth of 1 m and as stable wind conditions as practically possible.
6.3	For Marathon, the race area will extend from either Nyborg Strand or Slipshavn to the Island of Sprogø, the Island of Vresen or Kerteminde.
7	THE COURSES
7.1	The diagrams in Addendum A show the courses, the order in which marks are to be passed, and the side on which each mark is to be left.
7.2	For iQFoil Marathon, a bespoke course will be announced depending on wind conditions.

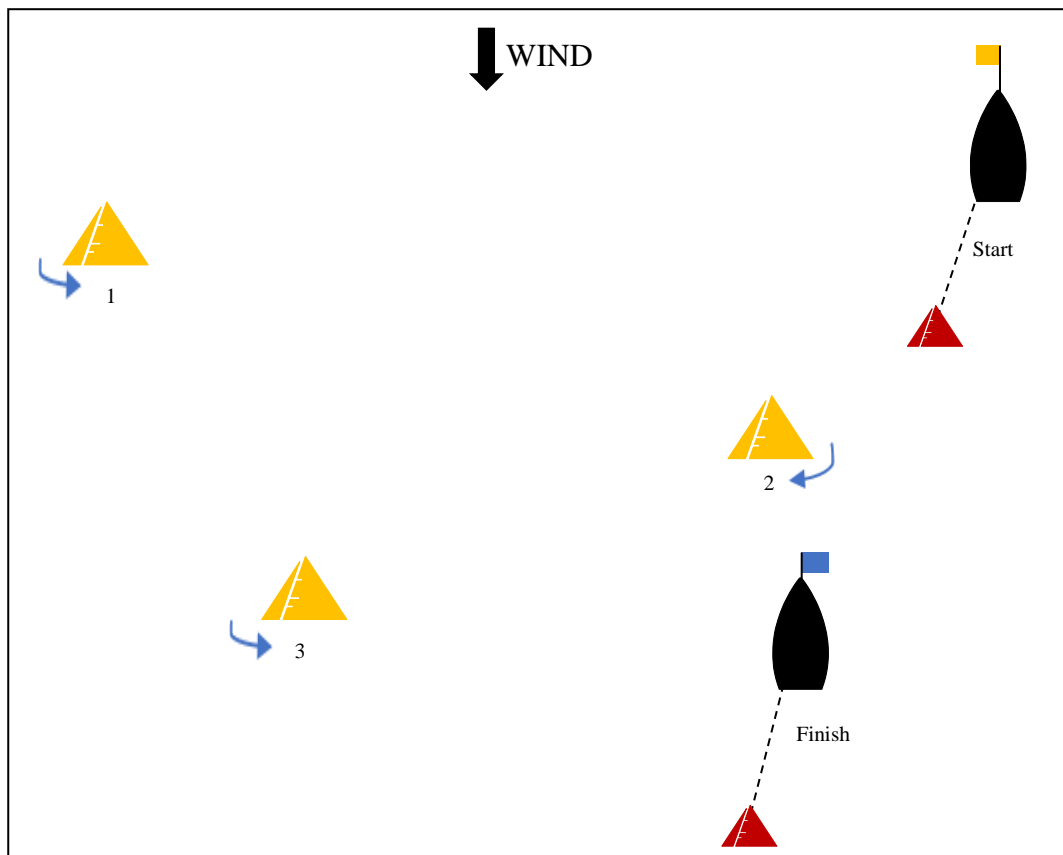
8	TARGET TIMES															
8.1	<p>Time limits and target times [in minutes] are as follows:</p> <table border="0" data-bbox="373 327 1206 577"> <thead> <tr> <th data-bbox="373 327 746 360">Discipline</th> <th data-bbox="746 327 938 360">Target time</th> <th data-bbox="938 327 1206 360">Finish window</th> </tr> </thead> <tbody> <tr> <td data-bbox="373 376 746 409">iQFoil Course Racing</td> <td data-bbox="746 376 938 409">16</td> <td data-bbox="938 376 1206 409">+100% of 1st board</td> </tr> <tr> <td data-bbox="373 427 746 461">iQFoil Slalom</td> <td data-bbox="746 427 938 461">4-5</td> <td data-bbox="938 427 1206 461">+100% of 1st board</td> </tr> <tr> <td data-bbox="373 479 746 512">iQFoil Marathon</td> <td data-bbox="746 479 938 512">60</td> <td data-bbox="938 479 1206 512">+100% of 1st board</td> </tr> <tr> <td data-bbox="373 530 746 564">IFCA Slalom</td> <td data-bbox="746 530 938 564">3-4</td> <td data-bbox="938 530 1206 564">+100% of 1st board</td> </tr> </tbody> </table> <p>Failure to meet the target times will not be grounds for redress. This changes RRS 62.1(a).</p>	Discipline	Target time	Finish window	iQFoil Course Racing	16	+100% of 1 st board	iQFoil Slalom	4-5	+100% of 1 st board	iQFoil Marathon	60	+100% of 1 st board	IFCA Slalom	3-4	+100% of 1 st board
Discipline	Target time	Finish window														
iQFoil Course Racing	16	+100% of 1 st board														
iQFoil Slalom	4-5	+100% of 1 st board														
iQFoil Marathon	60	+100% of 1 st board														
IFCA Slalom	3-4	+100% of 1 st board														
9	SAFETY REGULATIONS															
9.1	Check-Out and Check-In: If instructed by the race committee, all sailors must check-out and check-in before and after the Marathon Race. The standard penalty applied for breaking this instruction will be 1 point for each of the relevant races.															
9.2	If instructed by the race committee, all sailors must carry a cell phone for the Marathon Race. The standard penalty applied for breaking this instruction will be 1 point for each of the relevant races.															
9.3	A boat that retires from a race shall notify the race committee as soon as possible. The standard penalty applied for breaking this instruction will be 1 point for the relevant race.															

**ADDENDUM A
RACING AREA**



ADDENDUM B
COURSE DIAGRAMS

SLALOM RACING SS3
(PREFERRED AT EVENTS WITH IFCA SLALOM)



The Start will be between a red pyramid and an orange flag on the start line vessel.

Marks 1, 2 and 3 are yellow pyramids.

Marks 1 and 3 are kept to port.

Mark 2 is kept to starboard.

For iQFoil Slalom Mark 1 can be extended with an additional buoy on a rope ~ 10 m leeward of Mark 1. The additional buoy shall also be kept to port.

The Finish will be between a red pyramid and a blue flag on *either* the finish line vessel or a buoy.

Rounding order:

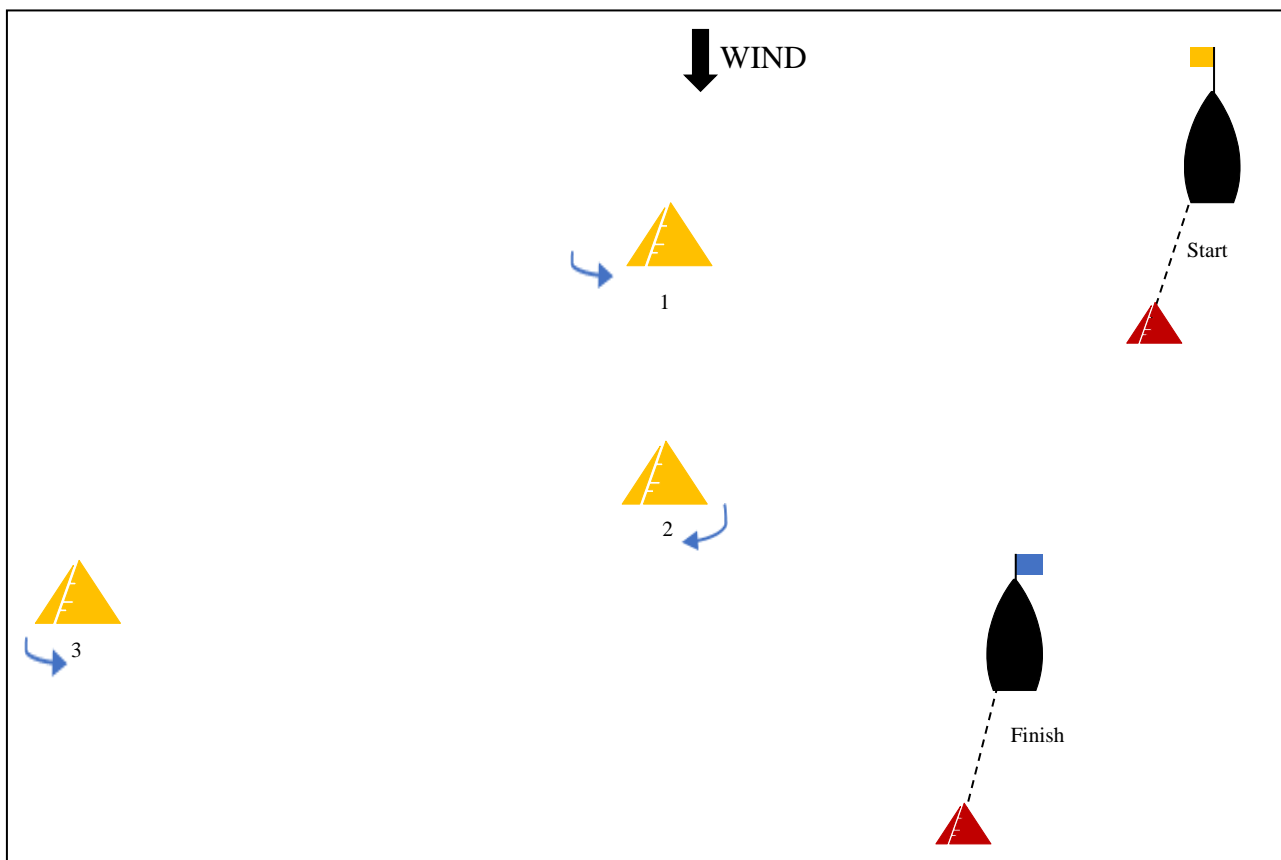
iQFoil 7-8-9 and IFCA Slalom:

START – 1 – 2 – 3 – Finish.

SLALOM RACING PS3

Same as SS3 above, mirrored left-right.

SLALOM RACING PD3
(PREFERRED AT EVENTS WITHOUT IFCA SLALOM)



The Start will be between a red pyramid and an orange flag on the start line vessel.

Marks 1, 2 and 3 yellow pyramids.

Marks 1 and 3 are kept to port.

Mark 2 is kept to starboard.

The Finish will be between a red pyramid and a blue flag on *either* the finish line vessel or a buoy.

Rounding order:

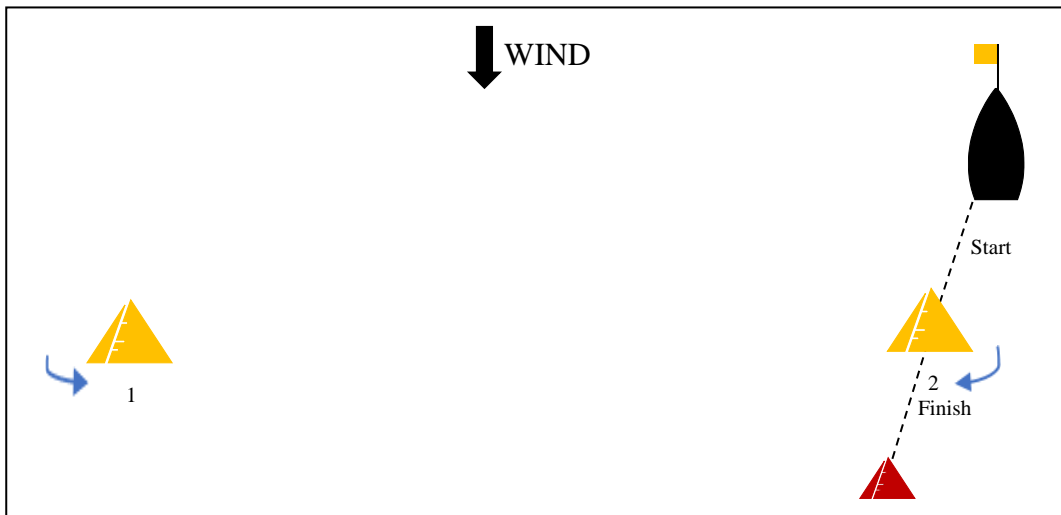
iQFoil 7-8-9 and IFCA Slalom:

START – 1 – 2 – 3 – Finish.

SLALOM RACING SD3

Same as PD3 above, mirrored left-right.

SLALOM RACING SS8 (MINIMUM)



The Start will be between Mark 2 and an orange flag on the start line vessel.

Marks 1 and 2 are yellow pyramids.

Marks 1 is kept to port.

Mark 2 is kept to starboard, except when starting and finishing where it will be kept to port.

The Finish will be between Mark 2 and a red pyramid.

Rounding order:

iQFoil 7-8-9 and IFCA Slalom:

START – 1 – 2 – 1 – Finish.

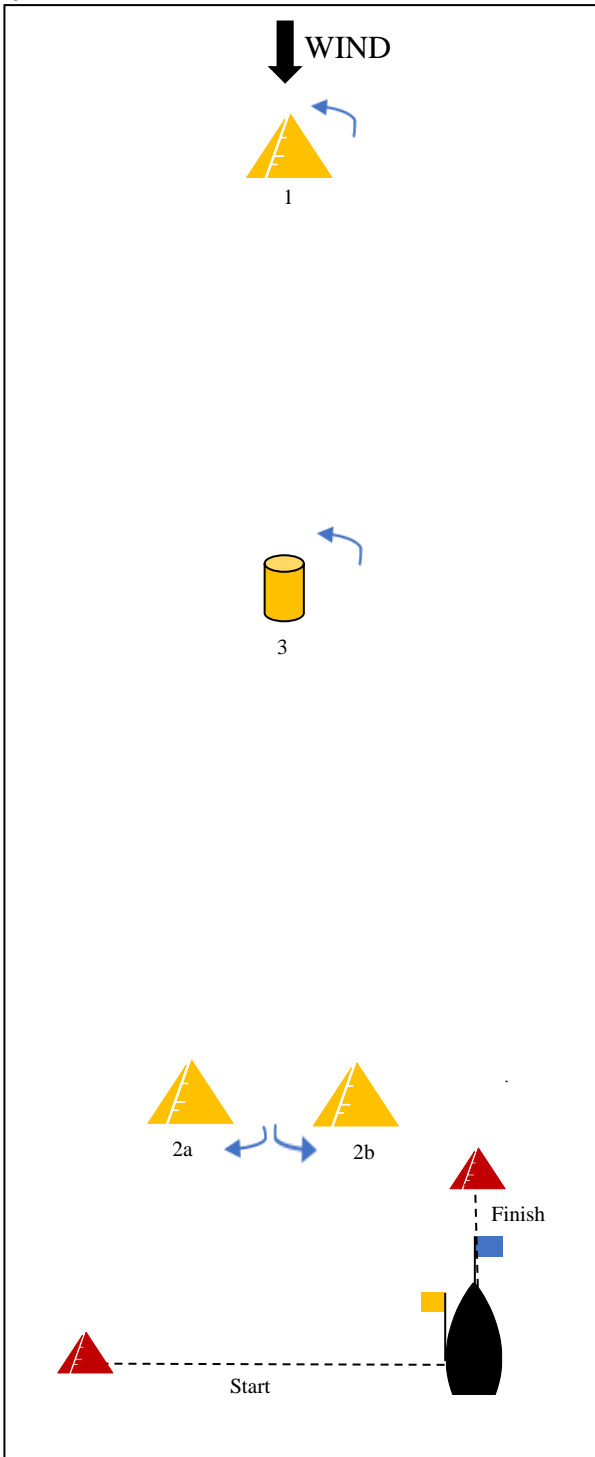
SLALOM RACING PS8

Same as PS8 above, mirrored left-right.

COURSE RACING LR2

(PREFERRED AT EVENTS WITHOUT IFCA SLALOM)

8



The Start will be between an orange flag on a buoy and an orange flag on the start line vessel.

Marks 1 and 2 are yellow cylindrical buoy.
Mark 3 is a yellow cylindrical buoy.

Marks 1, 2b and 3 are kept to port.
Mark 2a is kept to starboard.

The Finish will be between a blue flag on a buoy and a blue flag on the finish line vessel.

Rounding order:

iQFoil 9

START – 1 – 2a/2b – 1 – 2a/2b – Finish.

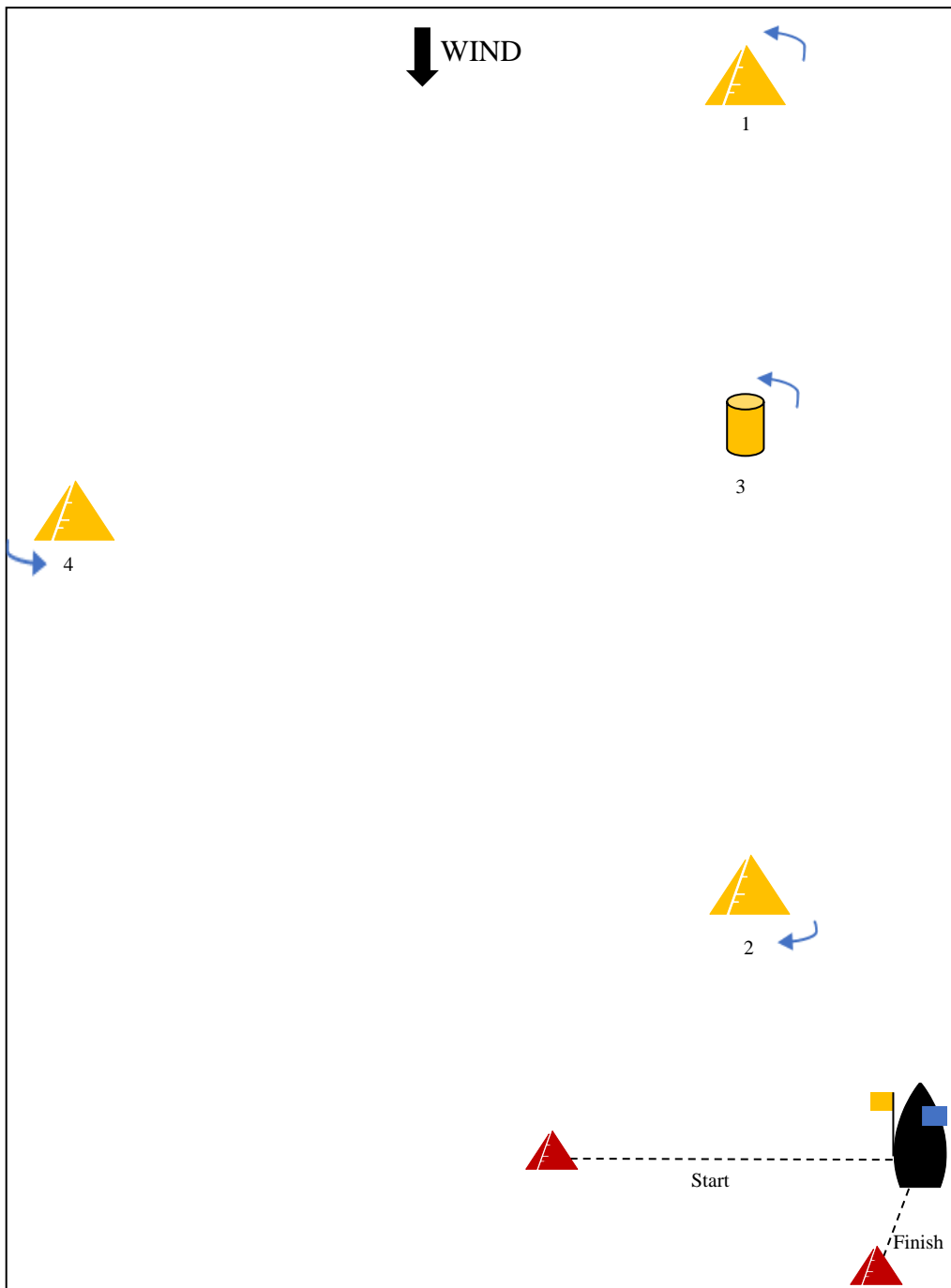
iQFoil 7-8

START – 1 – 2a/2b – 3 – 2a/2b – Finish.

iQFoil 7-8-9 reduced course

START – 1 – 2a/2b – Finish.

**COURSE RACING LR2+
(PREFERRED AT EVENTS WITH IFCA SLALOM)**



The Start will be between a red pyramid and an orange flag on the start line vessel.

Marks 1, 2, and 4 are yellow pyramids.

Marks 3 is a yellow cylinder.

Marks 1, 3 and 4 are kept to port. Mark 2 is kept to starboard.

The Finish will be between a red pyramid and a blue flag on the finish line vessel.

Rounding order:

iQFoil 9

START – 1 – 2 – 1 – 4 – Finish.

iQFoil 7-8

START – 1 – 2 – 3 – 4 – Finish.

iQFoil 7-8-9 reduced course

START – 1 – 2 – Finish.

COURSE RACING M2 (MINIMUM)



The Start will be between Mark 2 and an orange flag on the start line vessel.

Marks 1 and 2 are yellow pyramids.

Marks 1 is kept to port.

Mark 2 is kept to starboard.

The Finish will be between Mark 2 and a blue flag on the finish line vessel.

Rounding order:

iQFoil 7-8-9

START – 1 – 2 – 1 – Finish.

iQFoil 7-8-9 reduced course

START – 1 – Finish.