




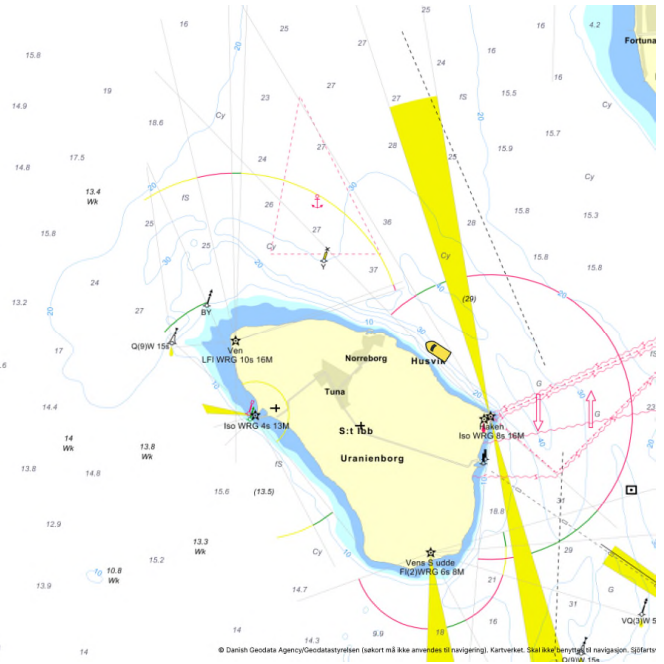
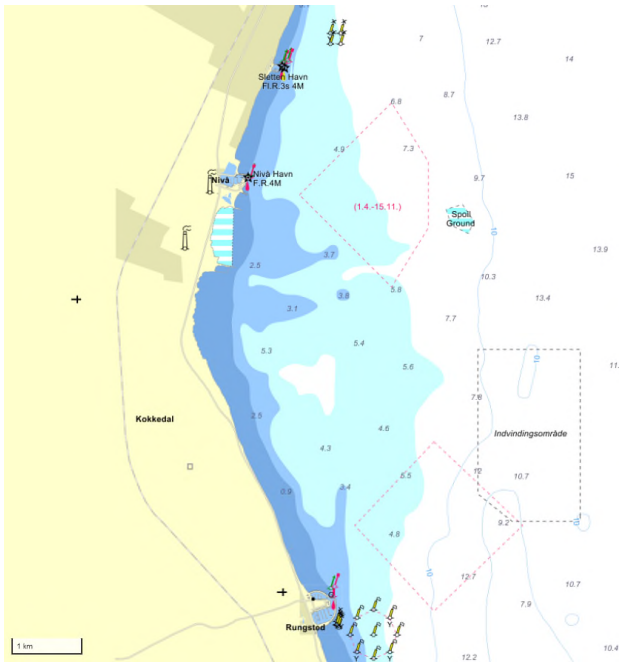


	<p style="text-align: center;">Stage 3 of the DIF/DS/DBO Danish Championships 2023 for iQFoil and IFCA Slalom and Island of Ven Long Distance Race Nivå Bådelaug, June 24-25th 2023</p>
1	RULES
1.1	The event is governed by the rules as defined in <i>The Racing Rules of Sailing</i> including the prescriptions of Nordic Sailing Federation and Danish Sailing Association.
1.2	Furthermore, the following applies: RRS Appendix B, except RRS B5 61.1 and B8.A8 (for iQFoil), Windsurfing Slalom Racing Rules (WSRR) (for IFCA Slalom), RRS Appendix T , (IFCA) Championship Rules (for IFCA Slalom), Statutes for the Danish Championships in Sailing , DBO Equipment Rules for iQFoil and IFCA (DBO-ER) 2023 , DBO Championship Rules for iQFoil and IFCA (DBO-CR) 2023 .
1.3	In IFCA Championship Rule 9.1, the minimum wind speed is changed from 11 knots to 14 knots from 1 minute before the starting signal to 50% of the starting boards have completed the heat.
2	NOTICES TO COMPETITORS
2.1	Notices to competitors will be posted on the official notice board(s) located in the Danish Championships WhatsApp Group .
3	SIGNALS MADE ASHORE
3.1	Signals made ashore will be displayed at the official flagpole located by the Nivå Bådelaug club house.

4	SCHEDULE
4.1	<p><u>Day 1:</u> 07.45 - 08.00: Late entry 08.00 - 09.30: Check-in 09.00: Intended discipline announced 09.30: Skippers' meeting. Course diagram(s) announced 10.30: Elimination table for slalom announced 11.00: 1st possible warning signal</p> <p><u>Day 2 and following days:</u> 08.30: Intended discipline announced. 09.00: Skippers' meeting. Course diagram(s) announced 09.30: Elimination table for slalom announced 10.00: 1st possible warning signal</p> <p><u>Last day:</u> After last race: Prize giving</p>
5	CLASS FLAGS
5.1	<p>iQFoil 9 (Men/U21): </p> <p>iQFoil 7-8 (Women/U19/U17): </p> <p>IFCA Slalom: </p>
6	RACING AREAS
6.1	In Addendum A, a map of the general race area is shown.
6.2	For Slalom and Course Racing, the race area will be close Nivå Harbour while keeping a minimum water depth of 1 m and as stable wind conditions as practically possible.
6.3	For Marathon, the race area will extend from Nivå Harbour to or around the Island of Ven.
7	THE COURSES
7.1	The diagrams in Addendum A show the courses, the order in which marks are to be passed, and the side on which each mark is to be left.
7.2	For iQFoil Marathon, a bespoke course will be announced depending on wind conditions.

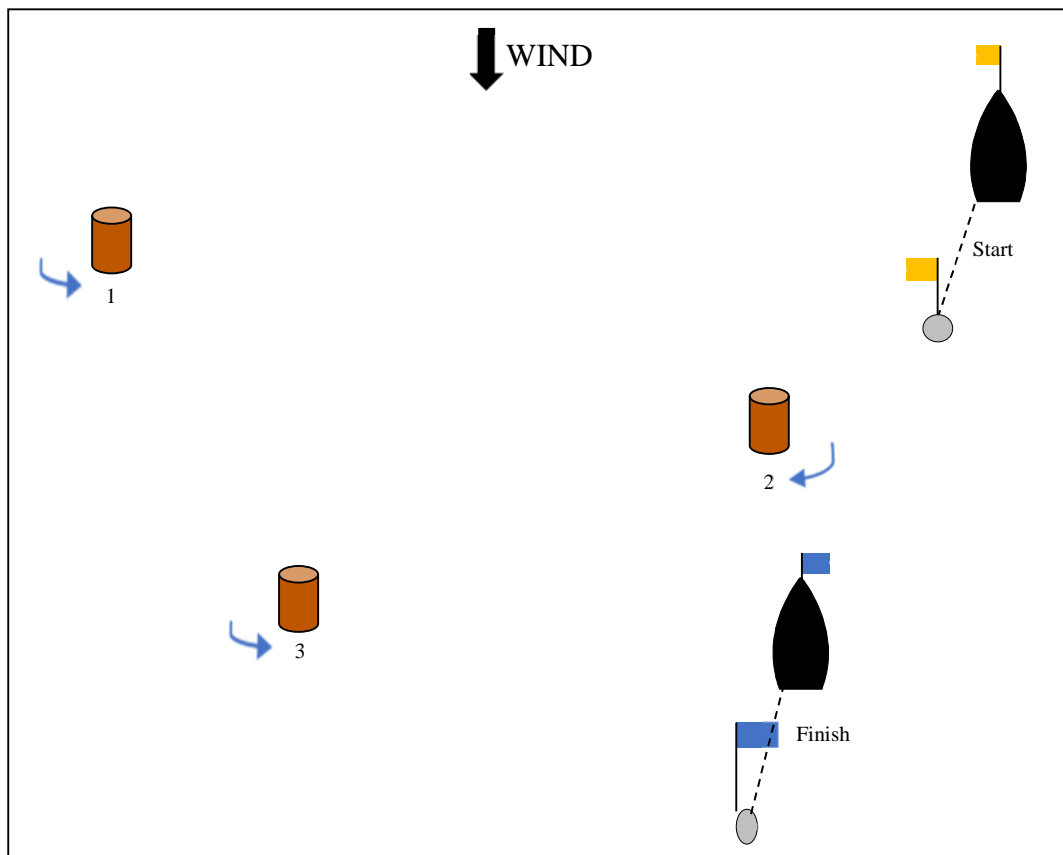
8	TARGET TIMES															
8.1	<p>Time limits and target times [in minutes] are as follows:</p> <table border="0"> <thead> <tr> <th data-bbox="373 327 507 360">Discipline</th> <th data-bbox="756 327 906 360">Target time</th> <th data-bbox="948 327 1139 360">Finish window</th> </tr> </thead> <tbody> <tr> <td data-bbox="373 383 660 416">iQFoil Course Racing</td> <td data-bbox="756 383 788 416">16</td> <td data-bbox="948 383 1203 416">+100% of 1st board</td> </tr> <tr> <td data-bbox="373 439 564 472">iQFoil Slalom</td> <td data-bbox="756 439 804 472">4-5</td> <td data-bbox="948 439 1203 472">+100% of 1st board</td> </tr> <tr> <td data-bbox="373 495 596 528">iQFoil Marathon</td> <td data-bbox="756 495 788 528">60</td> <td data-bbox="948 495 1203 528">+100% of 1st board</td> </tr> <tr> <td data-bbox="373 551 549 584">IFCA Slalom</td> <td data-bbox="756 551 804 584">3-4</td> <td data-bbox="948 551 1203 584">+100% of 1st board</td> </tr> </tbody> </table> <p>Failure to meet the target times will not be grounds for redress. This changes RRS 62.1(a).</p>	Discipline	Target time	Finish window	iQFoil Course Racing	16	+100% of 1 st board	iQFoil Slalom	4-5	+100% of 1 st board	iQFoil Marathon	60	+100% of 1 st board	IFCA Slalom	3-4	+100% of 1 st board
Discipline	Target time	Finish window														
iQFoil Course Racing	16	+100% of 1 st board														
iQFoil Slalom	4-5	+100% of 1 st board														
iQFoil Marathon	60	+100% of 1 st board														
IFCA Slalom	3-4	+100% of 1 st board														
9	SAFETY REGULATIONS															
9.1	<p>Check-Out and Check-In: If instructed by the race committee, all sailors must check-out and check-in before and after the Marathon Race. The standard penalty applied for breaking this instruction will be 1 point for each of the relevant races.</p>															
9.2	<p>If instructed by the race committee, all sailors must carry a cell phone for the Marathon Race. The standard penalty applied for breaking this instruction will be 1 point for each of the relevant races.</p>															
9.3	<p>A boat that retires from a race shall notify the race committee as soon as possible. The standard penalty applied for breaking this instruction will be 1 point for the relevant race.</p>															

ADDENDUM A RACING AREA



ADDENDUM B
COURSE DIAGRAMS

SLALOM RACING SS3
(PREFERRED AT EVENTS WITH IFCA SLALOM)



The Start will be between an orange flag on a buoy and an orange flag on the start line vessel.

Marks 1, 2 and 3 are orange, cylindrical buoys.

Marks 1 and 3 are kept to port.

Mark 2 is kept to starboard.

For iQFoil Slalom Mark 1 can be extended with an additional buoy on a rope ~ 10 m leeward of Mark 1. The additional buoy shall also be kept to port.

The Finish will be between a blue flag on a buoy and a blue flag on *either* the finish line vessel or a buoy.

Rounding order:

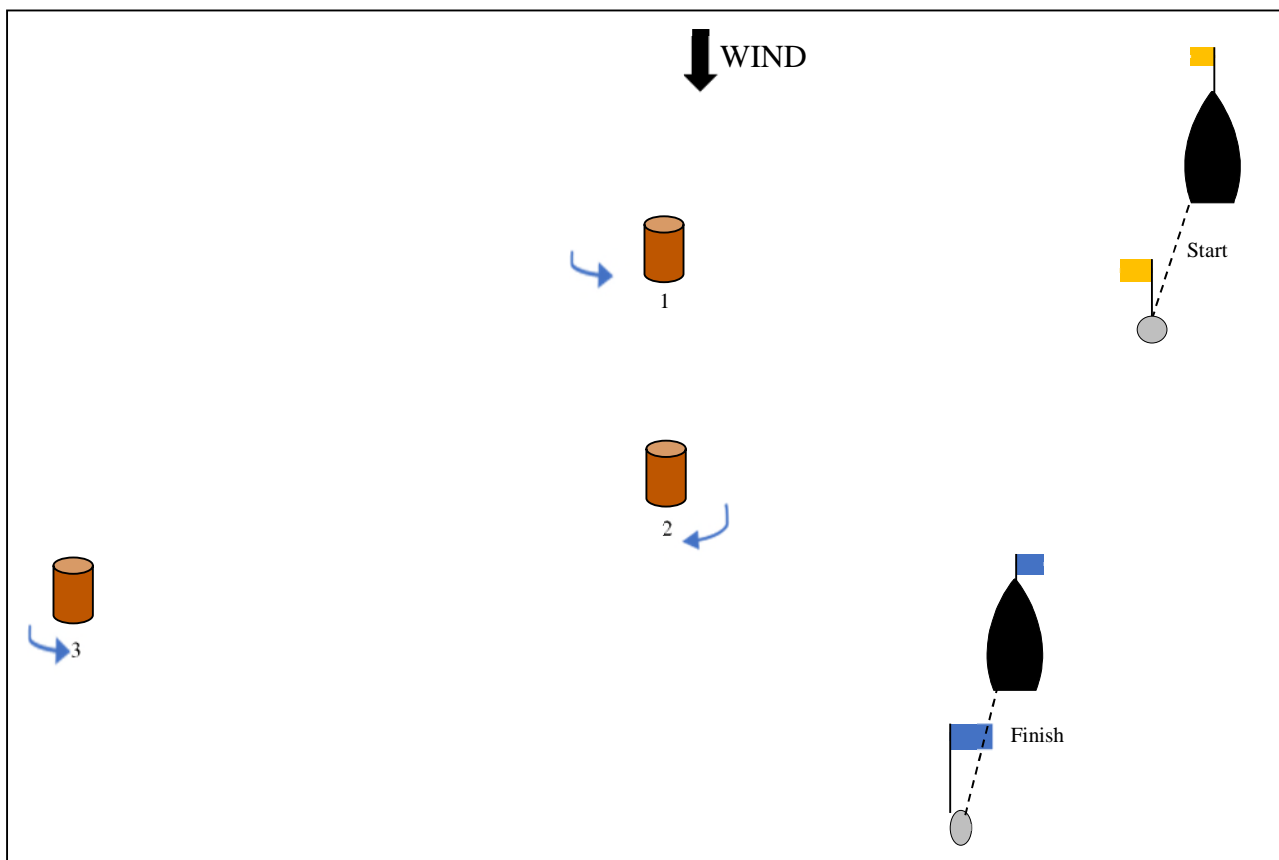
iQFoil 7-8-9 and IFCA Slalom:

START – 1 – 2 – 3 – Finish.

SLALOM RACING PS3

Same as SS3 above, mirrored left-right.

SLALOM RACING PD3
(PREFERRED AT EVENTS WITHOUT IFCA SLALOM)



The Start will be between an orange flag on a buoy and an orange flag on the start line vessel.

Marks 1, 2 and 3 are orange, cylindrical buoys.

Marks 1 and 3 are kept to port.

Mark 2 is kept to starboard.

The Finish will be between a blue flag on a buoy and a blue flag on *either* the finish line vessel or a buoy.

Rounding order:

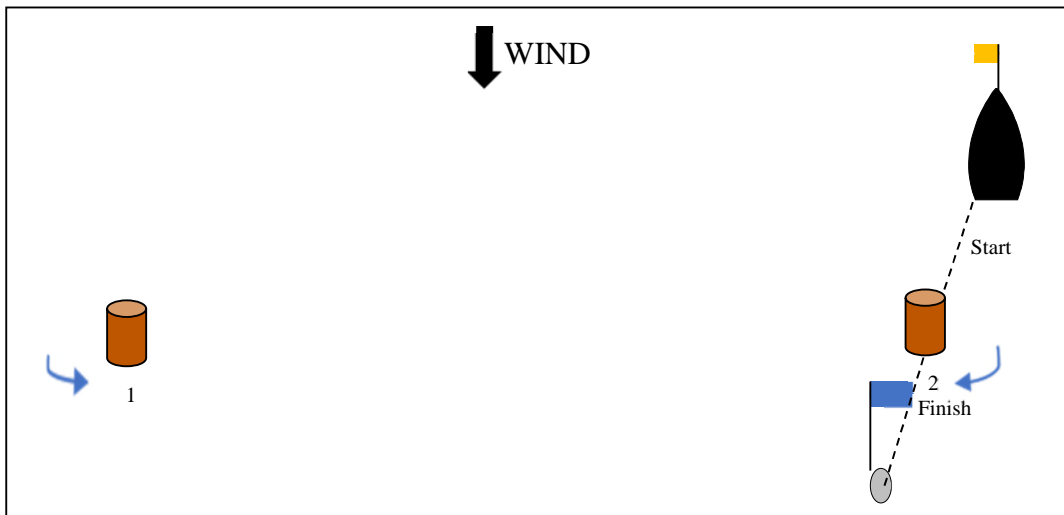
iQFoil 7-8-9 and IFCA Slalom:

START – 1 – 2 – 3 – Finish.

SLALOM RACING SD3

Same as PD3 above, mirrored left-right.

SLALOM RACING SS8 (MINIMUM)



The Start will be between Mark 2 and an orange flag on the start line vessel.

Marks 1 and 2 are orange, cylindrical buoys.

Marks 1 is kept to port.

Mark 2 is kept to starboard, except when starting and finishing where it will be kept to port.

The Finish will be between Mark 2 and a blue flag on a buoy.

Rounding order:

iQFoil 7-8-9 and IFCA Slalom:

START – 1 – 2 – 1 – Finish.

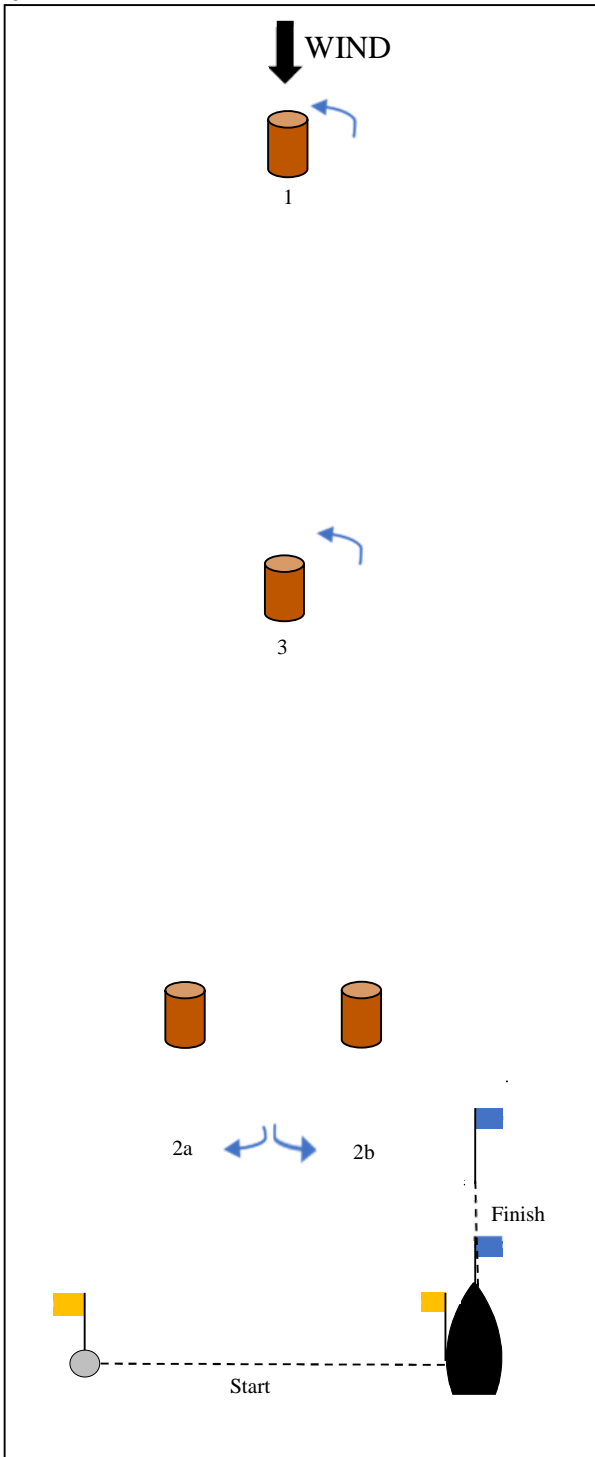
SLALOM RACING PS8

Same as PS8 above, mirrored left-right.

COURSE RACING LR2

(PREFERRED AT EVENTS WITHOUT IFCA SLALOM)

8



The Start will be between an orange flag on a buoy and an orange flag on the start line vessel.

Marks 1, 2 and 3 are orange, cylindrical buoys.

Marks 1, 2b and 3 are kept to port.

Mark 2a is kept to starboard.

The Finish will be between a blue flag on a buoy and a blue flag on the finish line vessel.

Rounding order:

iQFoil 9

START – 1 – 2a/2b – 1 – 2a/2b – Finish.

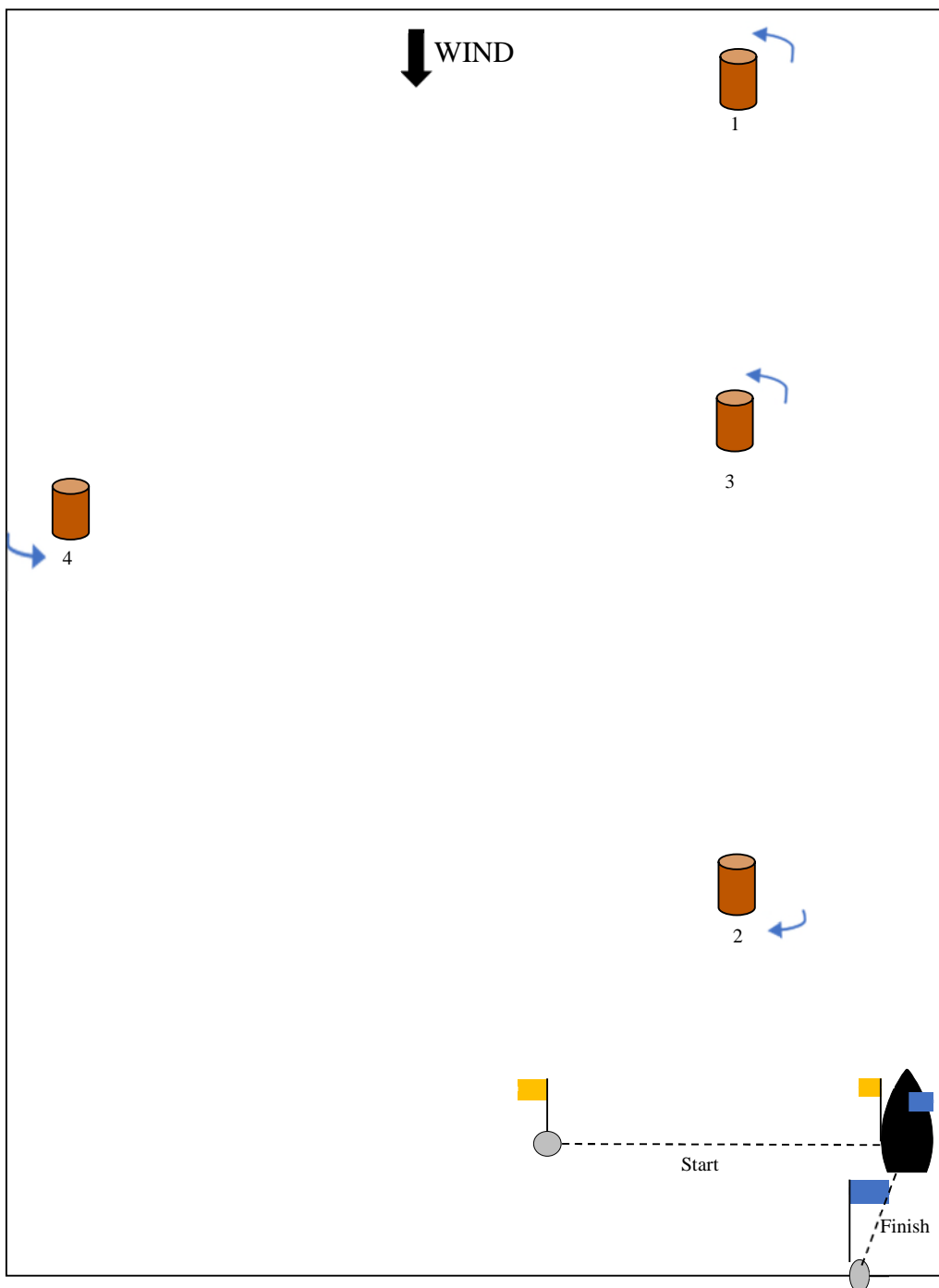
iQFoil 7-8

START – 1 – 2a/2b – 3 – 2a/2b – Finish.

iQFoil 7-8-9 reduced course

START – 1 – 2a/2b – Finish.

**COURSE RACING LR2+
(PREFERRED AT EVENTS WITH IFCA SLALOM)**



The Start will be between an orange flag on a buoy and an orange flag on the start line vessel.

Marks 1, 2, 3 and 4 are orange, cylindrical buoys.

Marks 1, 3 and 4 are kept to port. Mark 2 is kept to starboard.

The Finish will be between a blue flag on a buoy and a blue flag on the finish line vessel.

Rounding order:

iQFoil 9

START – 1 – 2 – 1 – 4 – Finish.

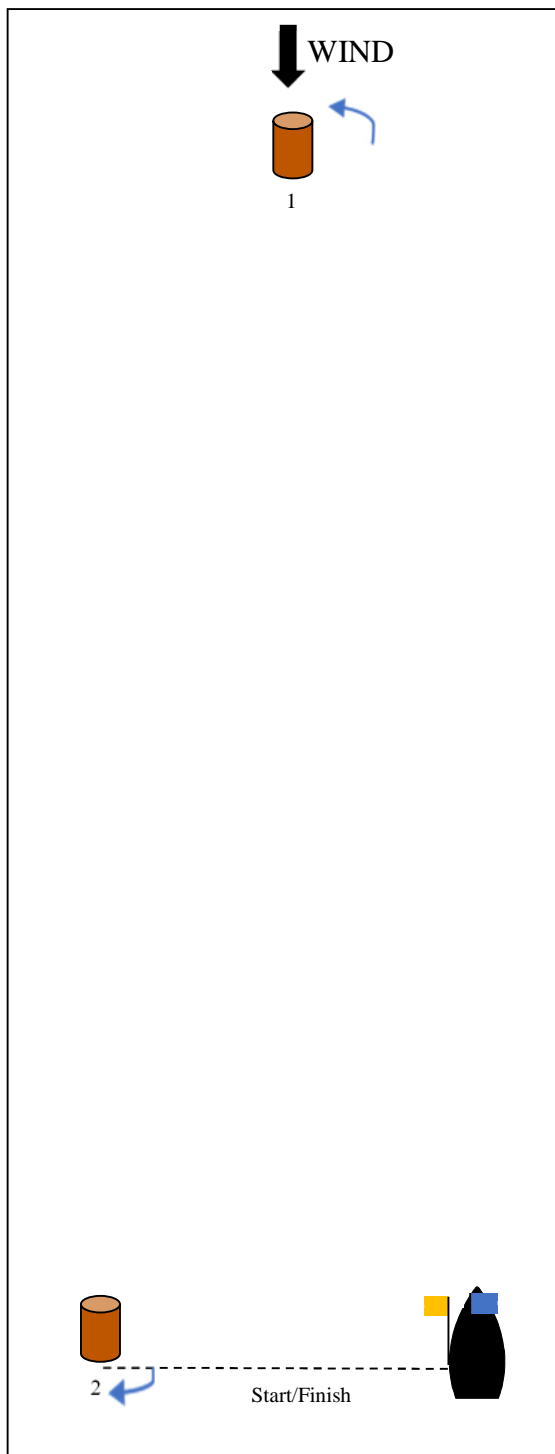
iQFoil 7-8

START – 1 – 2 – 3 – 4 – Finish.

iQFoil 7-8-9 reduced course

START – 1 – 2 – Finish.

**COURSE RACING M2
(MINIMUM)**



The Start will be between Mark 2 and an orange flag on the start line vessel.

Marks 1 and 2 are orange, cylindrical buoys.

Marks 1 is kept to port.

Mark 2 is kept to starboard.

The Finish will be between Mark 2 and a blue flag on the finish line vessel.

Rounding order:

iQFoil 7-8-9

START – 1 – 2 – 1 – Finish.

iQFoil 7-8-9 reduced course

START – 1 – Finish.